



# THE MANCHESTER

WITH EXTENDED LOFT

2448 sq.ft. | Elevation A

4 BEDROOM + 2.5 BATHROOM



[CobbleBeach.com](http://CobbleBeach.com)

# THE MANCHESTER

WITH LOFT

2203 sq.ft. | Elevation A

2 BEDROOM + 2.5 BATHROOM





Relax and unwind  
in this expansive  
Primary Bedroom

Spacious  
Walk-in Closet

Spa inspired  
free-standing  
Soaker Tub

Welcoming  
front porch

The heart of the house,  
the Great Room features  
a stunning fireplace

Large gourmet  
Kitchen with  
extended island  
countertop

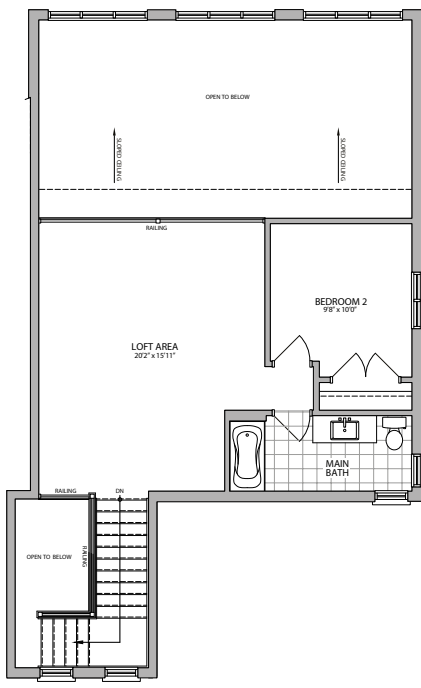
A Laundry Room with  
plenty of storage

Walk-in Pantry

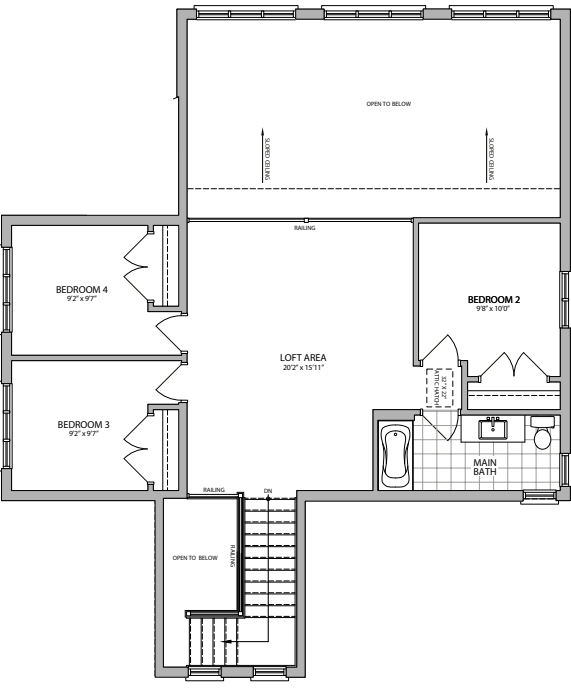
# THE MANCHESTER

WITH LOFT | 2203 sq.ft.  
2 BEDROOM + 2.5 BATHROOM

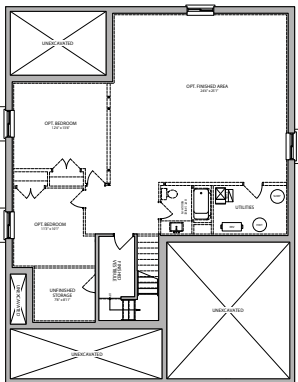
WITH EXTENDED LOFT | 2448 sq.ft.  
4 BEDROOM + 2.5 BATHROOM  
PLUS 144 SQ.FT. FINISHED VESTIBULE



SECOND FLOOR PLAN  
Elevation A



EXTENDED LOFT FLOORPLAN  
Elevation A



BASEMENT FLOOR PLAN  
Elevation A



Elevation A w/Loft



Elevation A w/Extended Loft



All drawings are artist's concepts and may vary slightly from the final product. Actual usable floor space may vary from stated area, and square footage has been calculated based on usable living space according to the TARIION rules, and does not include garages or unfinished basement areas. Drawings may show optional features which may not be included in the base price. Bulkheads & box outs may be required as chases for plumbing & mechanical. Garage man door location, if applicable, may vary subject to grade. In an ongoing review of homeowner's needs, changes may have been incorporated into our "New Home Features" and construction techniques. Specifications subject to change without notice. E. & O. E. September 2020