

THE DUKE

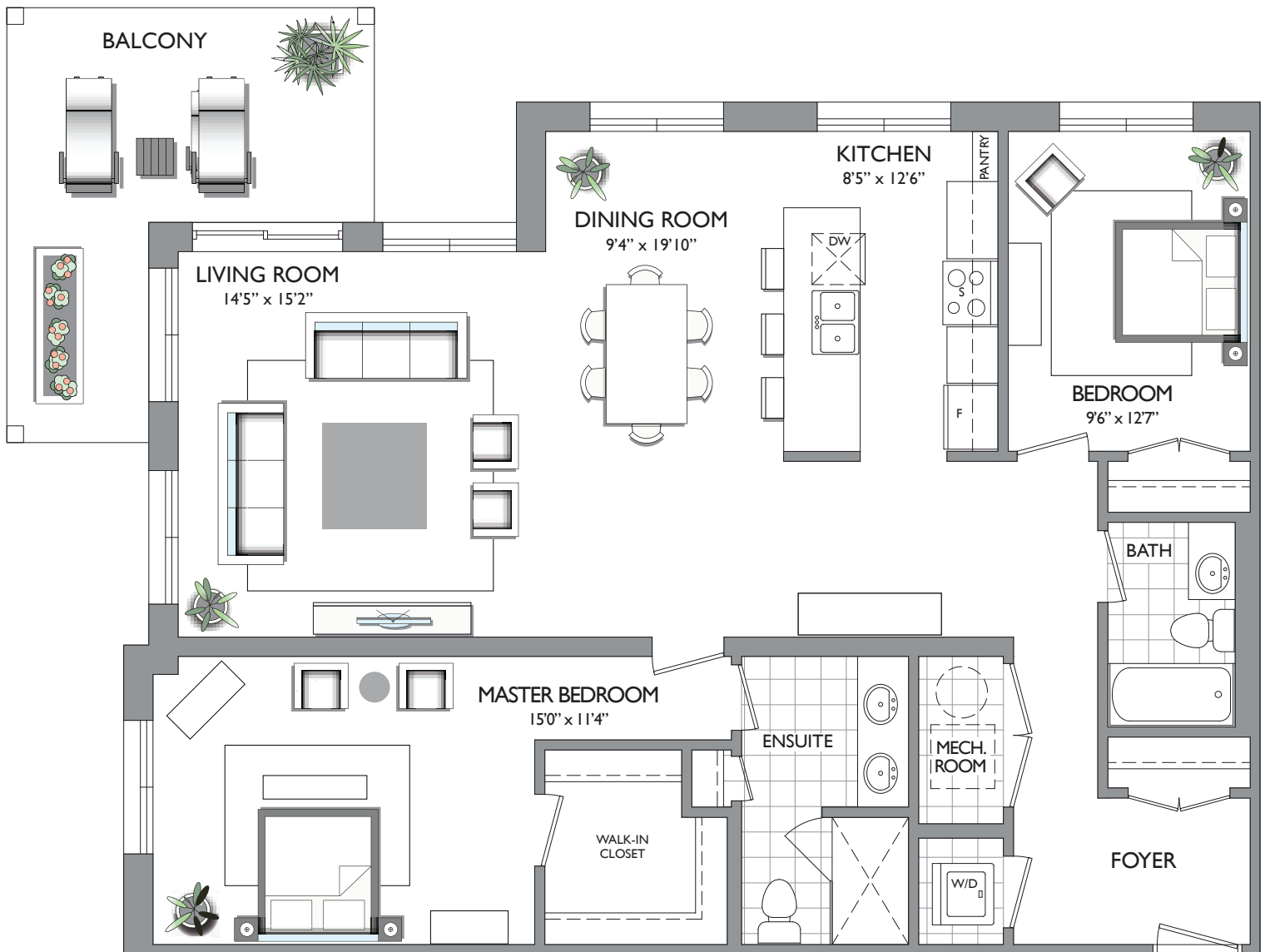
2 BEDROOM

TYPE I

1410 SF



ROYAL WINDSOR
AT BALMORAL VILLAGE



FIRST FLOOR



SECOND FLOOR



THIRD FLOOR



FOURTH FLOOR



FIFTH FLOOR

All drawings are artist's concepts and may vary slightly from the final product. Actual usable floor space may vary from stated area, and square footage has been calculated based on usable living space according to the TARIION rules, and does not include garages or unfinished basement areas. Drawings may show optional features which may not be included in the base price. Bulkheads & box outs may be required as chases for plumbing & mechanical. Garage man door location, if applicable, may vary subject to grade. In an ongoing review of homeowner's needs, changes may have been incorporated into our "New Home Features" and construction techniques. Specifications subject to change without notice. E. & O. E. August 2019

